



# Agilent General Purpose Switch Modules

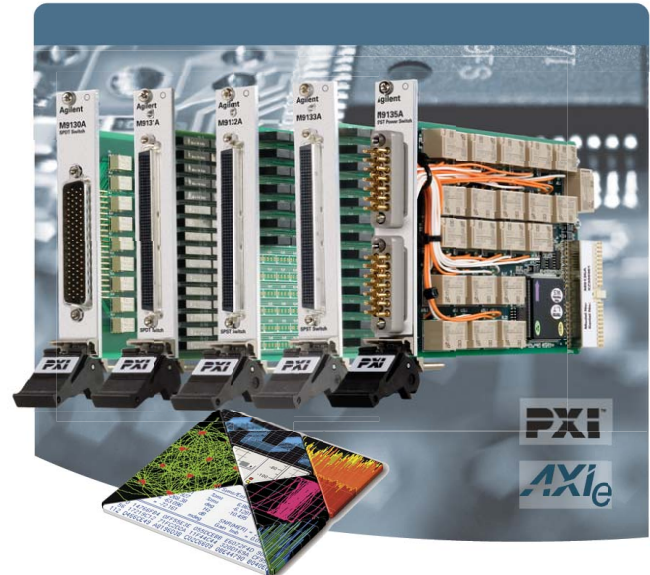
**DISCOVER** the Alternatives...

## Industries and Applications

- Aerospace/defense
- Automotive
- Electronic test
- Medical
- Semiconductor

## Product Description

The PXI general purpose switch modules deliver fast, reliable switching in a variety of configurations. Cycle power to products under test, control indicator, and status lights, or actuate external power relays and solenoids with independent, single-pole, double-throw (Form C) or single-pole, single-throw (Form A) switches in a single PXI module. The line also includes a module that can handle up to 300W/1250W for switching heavy loads or power supplies.



... Agilent **Modular** Products

### Models

M9130A	26-ch, SPDT, armature relays
M9131A	64-ch, SPDT, reed relays
M9132A	50-ch, SPST, reed relays
M9133A	100-ch, SPST, reed relays
M9135A	20-ch, SPST, 10A, 300W

## Main Features and Benefits

Product features	Your benefit
Up to 100-channel general purpose EM relays	High-density, general purpose switching in a compact module
Power relay module	Get the performance you need to switch heavy loads with up to 300W (DC resistive load)/1250W (AC resistive load)
Software drivers support the most common programming environments	Work in your environment of choice and reduce development time
Optional connector block, soft front panels, and Agilent Connection Expert	Fast and easy installation and configuration

## Specifications and Characteristics

Hardware			
Modules	Max volts (CAT 1) (typ)	Max switch/carry rating (typ)	Max power (nom)
M9130A 26-ch SPDT, Form C, armature	250Vrms	2A/2A	60W
M9131A 64-ch SPDT, Form C, reed	100Vrms	0.25A/1A	3W
M9132A 50-ch SPST, Form A, reed	100Vrms	1A/1A	25W
M9133A 100-ch SPST, Form A, reed	100Vrms	1A/1A	25W
M9135A 20-ch SPST, Form A, armature	250Vrms/ 125Vdc	5A/5A	300W

Chassis slot compatibility: cPCI (J1), PXI-1, PXIe Hybrid



**Agilent Technologies**

## Software Information

Operating systems	Microsoft Windows® XP Microsoft Windows® Vista (32/64-bit) Microsoft Windows® 7 (32/64-bit)
Standard compliant drivers	IVI-COM, IVI-C, LabVIEW, MATLAB
Supported application development environments (ADE)	VisualStudio® (C/C++,C#, VB.NET), LabVIEW, LabWindows/CVI, MATLAB, VEE
Agilent IO Libraries	Includes: VISA Libraries, Agilent Connection Expert, IO Monitor

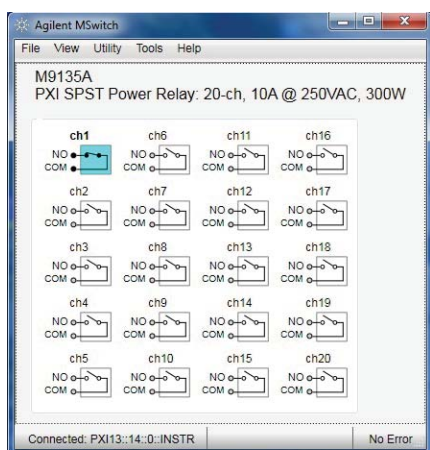


Figure 1. Soft front panel



Figure 2. PXI connector block

### Advantage Services: Warranty

Agilent Advantage Services is committed to your success throughout your equipment's lifetime.

R-51B-001-3C	1-year, return-to-Agilent warranty extended to 3 years
--------------	---

Microsoft Windows and Visual Studio are either registered trademarks or trademarks of Microsoft Corporation in the United States and/or other countries.

PCIe® is a registered U.S. trademark and/or service mark of PCI-SIG.

## Ordering Information

Model	Description
M9130A	PXI SPDT switch: 26-ch, 2A, armature relays
M9131A	PXI SPDT switch: 64-ch, 100Vrms/1A, reed relays
M9132A	PXI SPST switch: 50-ch, 100Vrms/1A, reed relays
M9133A	PXI SPST switch: 100-ch, 100Vrms/1A, reed relays
M9135A	PXI SPST power relay: 20-ch, 10A, 300W

### Related products

M9018A	18-slot PXIe chassis
M9021A	PCIe® cable interface
M9120A	4x32, 2-wire matrix switch
M9101A	64-ch, 2-wire multiplexer switch
M9187A	32-ch digital I/O

### Accessories

M9130A	
Y1181A	PXI connector block: 78-pin, shielded, female DSub (recommended)
Y1187A	PXI connector cable: 78-pin, male-to-female, 1Meter
Y1188A	PXI connector cable: 78-pin, male-to-female, 2Meter
M9131A-M9133A	
Y1182A	PXI connector block: 200-pin, shielded, male (recommended)
Y1189A	PXI connector cable: 200-pin, male-to-female, 1Meter
Y1190A	PXI connector cable: 200-pin, male-to-female, 2Meter
M9135A	
Y1191A	PXI power cable: 20-pin, female-to-terminated, 1Meter
Y1192A	PXI power cable: 20-pin, female-to-terminated, 2Meter
Y1193A	PXI power connector: 20-pin, female (universal), solder pin (recommended)

## Discover Agilent ...

[www.agilent.com](http://www.agilent.com)

[www.agilent.com/find/modular](http://www.agilent.com/find/modular)

[www.agilent.com/find/pxi-switch](http://www.agilent.com/find/pxi-switch)

USA: (800) 829-4444



For more information on Agilent Technologies' products, applications, or services, please contact your local Agilent office. The complete list is available at: [www.agilent.com/find/contactus](http://www.agilent.com/find/contactus)

Product specifications and descriptions in this document subject to change without notice.

© Agilent Technologies, Inc. 2011 Printed in USA, March 21, 2011  
5990-6354EN



**Agilent Technologies**